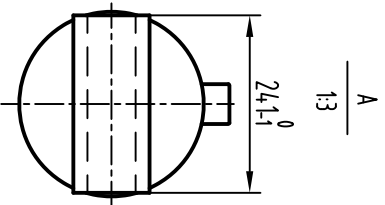
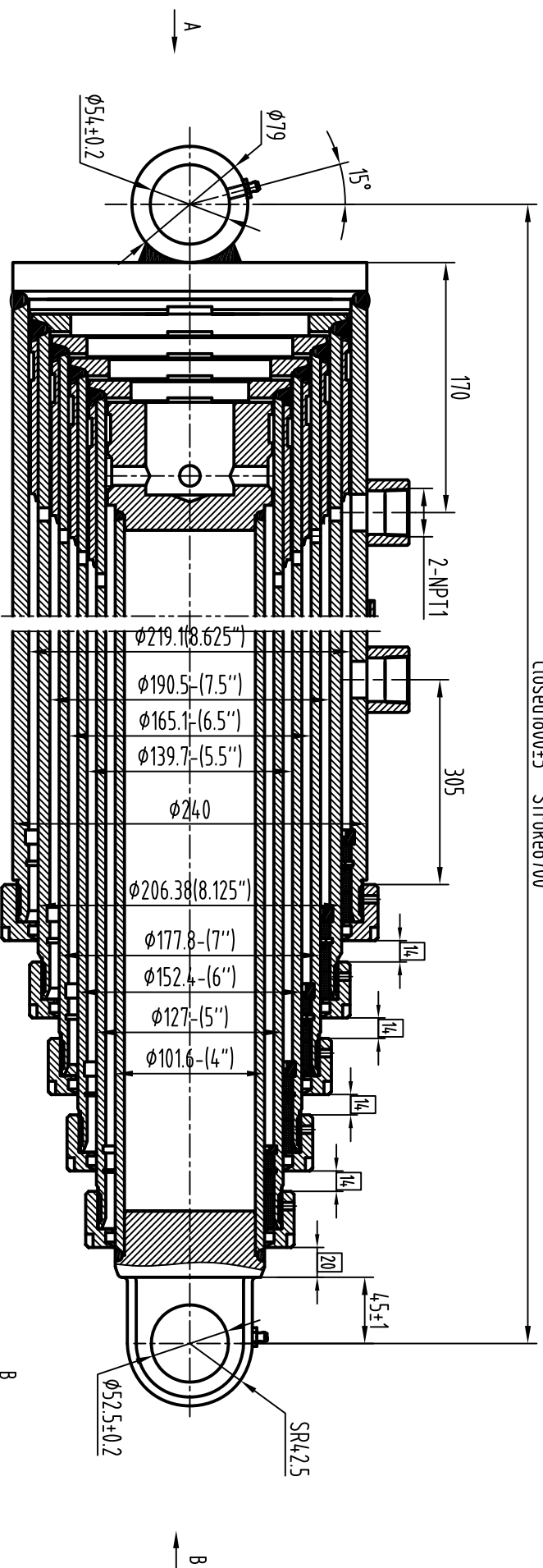
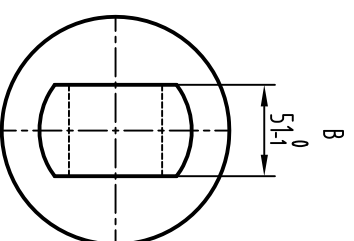


Closed 1800±5 Stroke 6700



instruction:

1. maximum pressure: 16Mpa
2. after the test, Non mating surface should be painted in color. even painting, no drooping, no sagging.
3. Others accomplish according to the standard QC/T460-2010<<cylinder for dump truck technology>>



		Number of mark		Submodel Change file No.		Signature		Date	
Mark of mark		Designed		Standard					
Drawn		Checked		Approved					
Sheet		OF		AKP85-265-A (AK85-4453-265)		Phase mark		Weight scale	
5TG-E206x6700PK/A				Single acting telescopic cylinder		by Rockmac		Akaliko	